



Winning Combination 1

fullsun

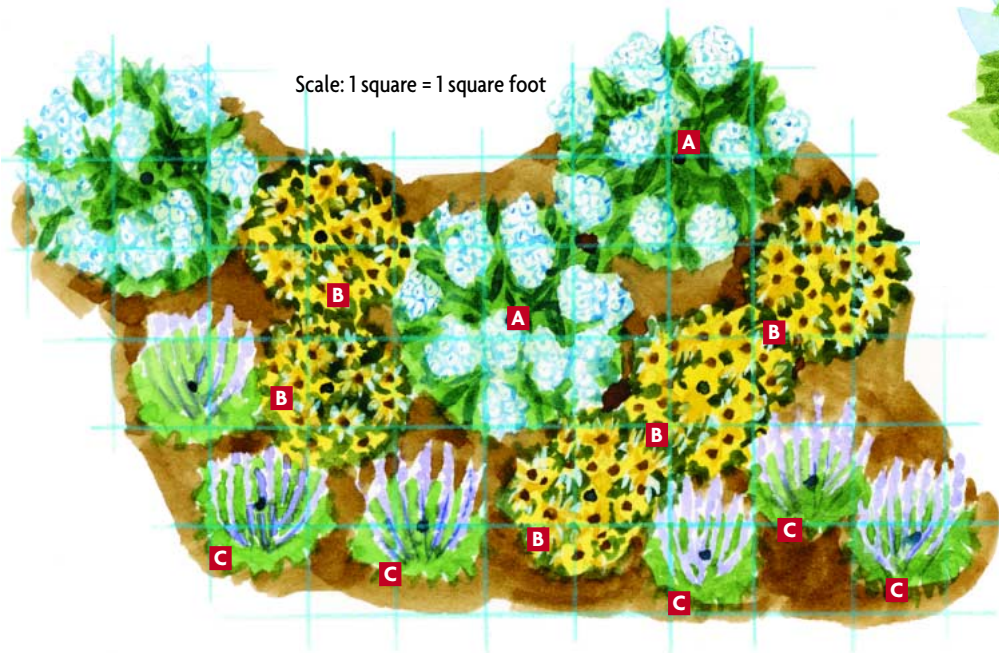
Blue is one of the most sought-after colors in the garden. And colors like yellow and white set it off spectacularly. Whether you have a small or large space, you can mix these three plants together to ensure color from early through late summer.

The show will start in early summer with veronica and phlox coming together. If you continue to deadhead the veronica, it'll bloom on and off through fall. In late summer, the black-eyed Susans will show their sunny blooms. Leave them standing through winter to feed the birds. However, if you don't want leftover seeds to sprout in your garden, it may be best to deadhead them after they bloom.

These plants are all easy-care perennials that do best in full sun and well-drained soil.



Scale: 1 square = 1 square foot



Plant list

Code	Plant Name	Cold/Heat Zones	No. of Plants
A	Garden phlox <i>Phlox paniculata</i> 'Fujiyama' ('Mt. Fuji')	4 to 8/8 to 1	3
B	Black-eyed Susan <i>Rudbeckia fulgida sullivantii</i> 'Goldsturm'	3 to 9/9 to 1	5
C	Speedwell <i>Veronica</i> Sunny Border Blue'	4 to 8/8 to 1	6



Winning Combination 2

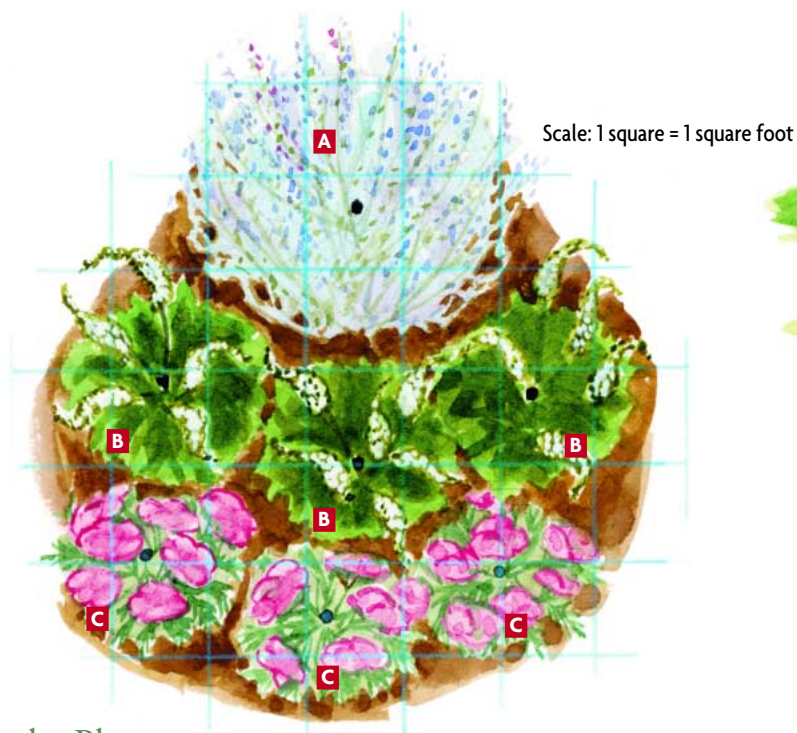


full sun

This plant combination peaks in mid- and late summer and provides an interesting contrast of shape, texture *and* color.

The garden will start with the flat-headed clusters of pink yarrow. When in midsummer, there's no mistaking the unique shape of gooseneck loosestrife's blooms. The nice thing about it is that it fills in quickly. However, be prepared to keep after it because it does like to spread. Since it spreads by both roots and seeds, you can contain it by growing the plants in sunken containers and deadheading spent blooms.

The airy blue Russian sage will finish off the season in late summer and autumn. All of these plants do best in full sun and well-drained soil.



Plant list

Code	Plant Name	Cold/Heat Zones	No. of Plants
A	Russian sage <i>Perovskia atriplicifolia</i>	4 to 9/9 to 1	1
B	Gooseneck loosestrife <i>Lysimachia clethroides</i>	4 to 9/9 to 1	3
C	Yarrow <i>Achillea millefolium</i> 'Heidi'	3 to 8/8 to 1	3



from
Garden Gate[®]
MAGAZINE

Winning Combination 3



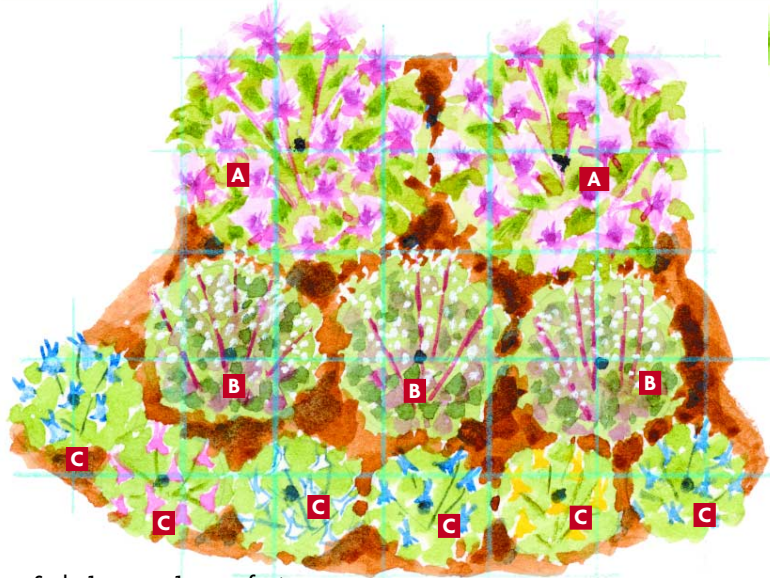
This garden combination will add color to a partly sunny spot in your yard midspring through midsummer and attract hummingbirds, as well.

'Biedermeier' columbines bloom in red, purple, pink, white and yellow in midspring. Allow them to set seeds and you'll have more and more as the years go by.

The burgundy foliage of 'Palace Purple' coral bells will remain attractive even after the white flower spikes have faded in early summer. And midsummer, bee balm's colorful purple blooms will appear atop leaves with a minty fragrance. Bee balm does tend to spread, so be prepared to share some with friends in the future.

Plant list

Code	Plant Name	Cold/Heat Zones	No. of Plants
A	Bee balm <i>Monarda</i> 'Blaustrumpf' ('Blue Stocking')	4 to 8/8 to 1	2
B	Coral bells <i>Heuchera micrantha</i> 'Palace Purple'	4 to 8/8 to 1	3
C	Columbine <i>Aquilegia xhybrida</i> 'Biedermeier'	3 to 8/8 to 1	6



Scale: 1 square = 1 square foot

THANKS FOR TRYING THESE FREE PLANS!



As a special "Thank You" for trying our site, you can Save \$1.00 when you order your next plan from GardenPlans.com. Just enter this four letter code in the "coupon code" field of the order form: "SAVE"

\$1.00 will be automatically deducted from the price of the plan.

www.GardenPlans.com